



Virginia Healthcare Workforce Briefs

Indicators from the Bureau of Labor Statistics'
Current Employment Statistics Survey
Series 1: State & National Employment

Series 1, Issue 83

February 2019

Highlights

- ◆ According to preliminary estimates, Virginia's Health Care & Social Assistance (HC&SA) sector experienced its third consecutive month of positive employment growth thanks to the creation of 2,100 new jobs in January. This gain represents a one-month annualized employment growth rate of 5.8%.
- ◆ Virginia's total nonfarm payroll enjoyed even stronger growth during the month. In January, the state's total nonfarm payroll increased by 23,700, a gain that represents a one-month annualized employment growth rate of 7.3%. In addition, this result represents the largest one-month gain in Virginia's total nonfarm payroll in more than seven years.
- ◆ Virginia's HC&SA sector was responsible for more than 5% of all HC&SA employment growth across the country in January. Employment in the national HC&SA sector increased by 37,300 during the month. This monthly gain translates into a 2.2% annualized growth rate.
- ◆ As with Virginia's economy, the national economy also enjoyed impressive growth in its total nonfarm payroll in January. The nation's total nonfarm payroll increased by 311,000 during the month. This increase represents the largest monthly gain in the nation's total nonfarm payroll in nearly one year.

Inside this Brief:

Virginia HC&SA Employment	2
Virginia Employment	2
National Employment	3
State Employment Growth	3
About the Data	4

Data in the report are seasonally adjusted. Self-employed persons, including health professionals in private practice, are not included.

Data in Brief

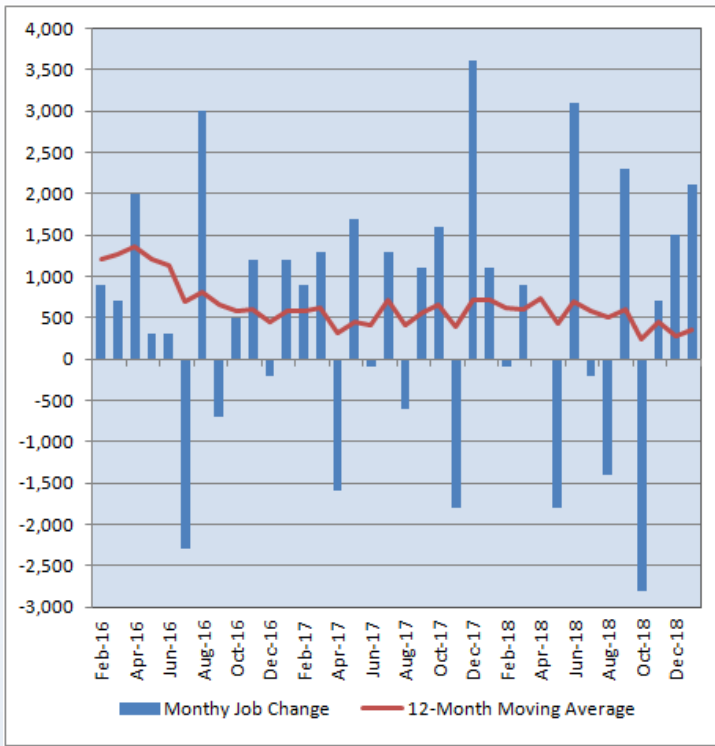
Seasonally Adjusted*	Employment, in Thousands				Growth Rate, Annualized		
	Jan. 2018	Oct. 2018	Dec. 2018	Jan. 2019	12 Month	3 Month	1 Month
Nonfarm, Total							
Virginia	3,988.2	4,000.1	4,008.6	4,032.3	1.1%	3.3%	7.3%
National	147,767.0	149,852.0	150,275.0	150,586.0	1.9%	2.0%	2.5%
Health Care & Social Assistance							
Virginia	443.7	443.7	445.9	448.0	1.0%	3.9%	5.8%
National	19,730.8	20,076.6	20,166.1	20,203.4	2.4%	2.6%	2.2%
All Other Nonfarm							
Virginia	3,544.5	3,556.4	3,562.7	3,584.3	1.1%	3.2%	7.5%
National	128,036.2	129,775.4	130,108.9	130,382.6	1.8%	1.9%	2.6%

Preliminary estimates are italicized

*Seasonally adjusted data are adjusted by the Bureau of Labor Statistics to account for weather, holidays and other seasonal changes. Economists use seasonally adjusted data to reveal underlying trends over time. This series uses seasonally adjusted data exclusively. When comparing data in this series to other HWDC series, or publications from other sources, it is important to note whether the data reported have been seasonally adjusted.

Virginia HC&SA Employment

Figure 1: Monthly Change in Employment in Virginia’s Health Care & Social Assistance Sector, Seasonally Adjusted.



According to preliminary data released on Monday, March 11, 2019, by the U.S. Department of Labor, Bureau of Labor Statistics, Virginia’s Health Care & Social Assistance (HC&SA) sector created 2,100 new jobs in January. This gain translates into a one-month annualized employment growth rate of 5.8%. This growth rate far exceeds the current long-term average for Virginia’s HC&SA sector. Over the past 12 months, employment in the state’s HC&SA sector has only grown by 1.0%. This is below the comparable employment growth rates of both Virginia’s total nonfarm payroll and the national HC&SA sector.

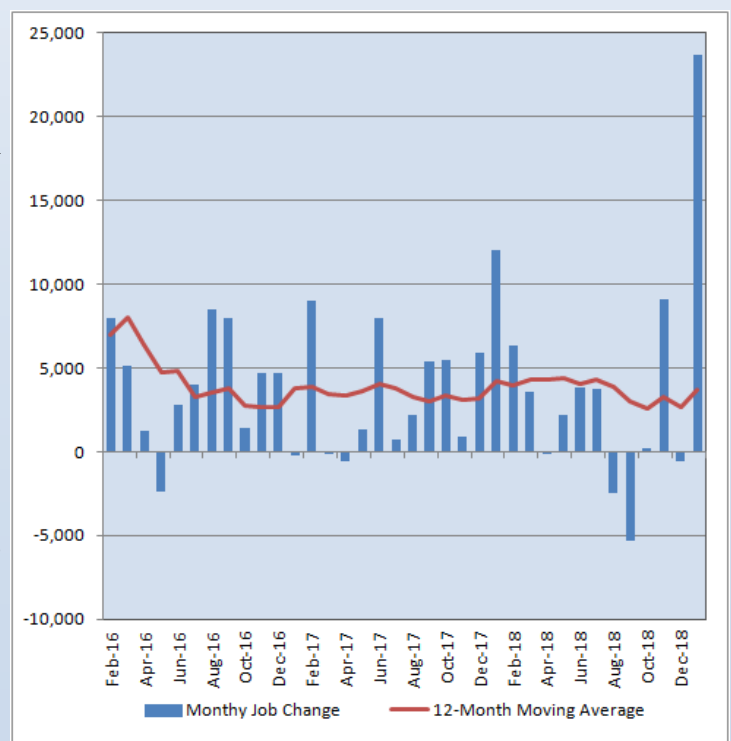
Short-term HC&SA employment growth has been very impressive. January’s results represent the largest one-month employment gain in the state’s HC&SA sector since last September. With January’s job gain, employment in Virginia’s HC&SA sector has increased for three consecutive months. This represents the first time since early 2017 in which Virginia’s HC&SA sector has increased employment in three consecutive months. During these three months, HC&SA employment has grown at a 3.9% annualized rate.

Virginia Employment

While Virginia’s HC&SA sector enjoyed a solid month of employment growth in January, the state’s total nonfarm payroll experienced its strongest monthly gain in more than seven years. Virginia’s total nonfarm payroll increased by 23,700 during the month, a gain that translates into a 7.3% annualized employment growth rate. This result represents a significant acceleration in the growth rate of Virginia’s total nonfarm payroll. For example, January’s employment growth rate is more than double the comparable three-month growth rate of 3.3%. In addition, this result far exceeds its 12-month employment growth rate of 1.1%.

January’s employment growth is particularly impressive given that the state’s total nonfarm payroll increased by a total of 32,400 in 2018. Thus, this month’s gain singlehandedly represents nearly three-quarters of the state’s full-year growth in its total nonfarm payroll in 2018. In addition, January’s growth led to a significant increase in the 12-month moving average of the change in Virginia’s total nonfarm payroll. Over the past year, the state’s total nonfarm payroll has experienced an average monthly gain of 3,675. This represents its highest average in five months.

Figure 2: Monthly Change in Employment in Virginia’s Total Non-farm Payroll, Seasonally Adjusted.

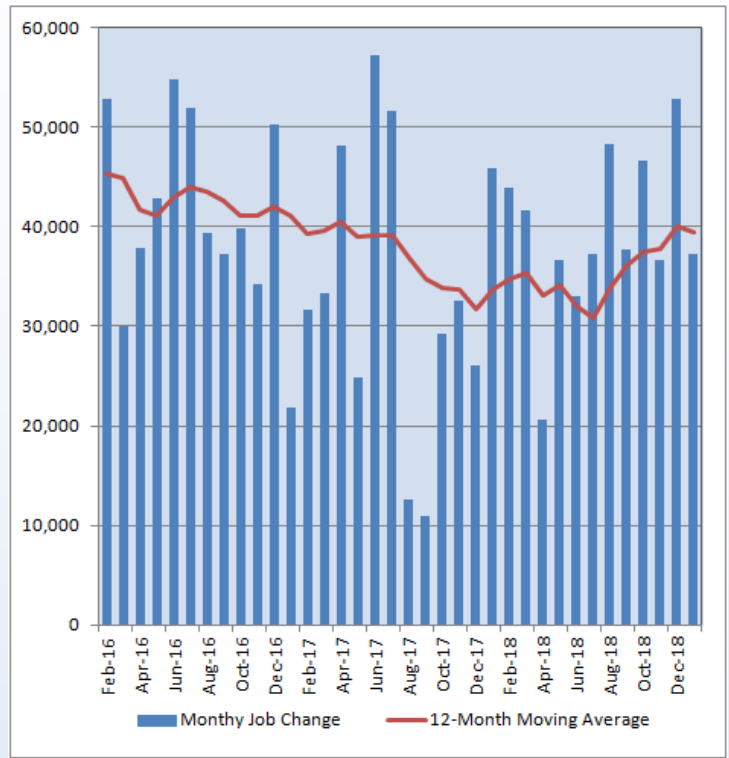


National Employment

In 2018, Virginia’s HC&SA sector was responsible for only 0.69% of all nationwide HC&SA employment growth. However, Virginia made a far more significant contribution to HC&SA employment growth across the country in January. With its 2,100 jobs created during the month, Virginia was responsible for 5.63% of the 37,300 national HC&SA jobs that were created in January. This month’s national HC&SA employment gain represents a considerable drop relative to the 52,900 jobs that were created in December. At the same time, this month’s result led to the first decline in the 12-month moving average of the employment change in the national HC&SA sector since last July. With this decline, the national HC&SA sector has created an average of 39,383 jobs per month over the past year.

While employment growth slowed in the national HC&SA sector, the growth in the nation’s total nonfarm payroll accelerated in January. The nation’s total nonfarm payroll increased by 311,000 during the month. This gain translates into a one-month annualized growth rate of 2.5%. In addition, January’s increase represents the largest monthly gain in the nation’s total nonfarm payroll since last February.

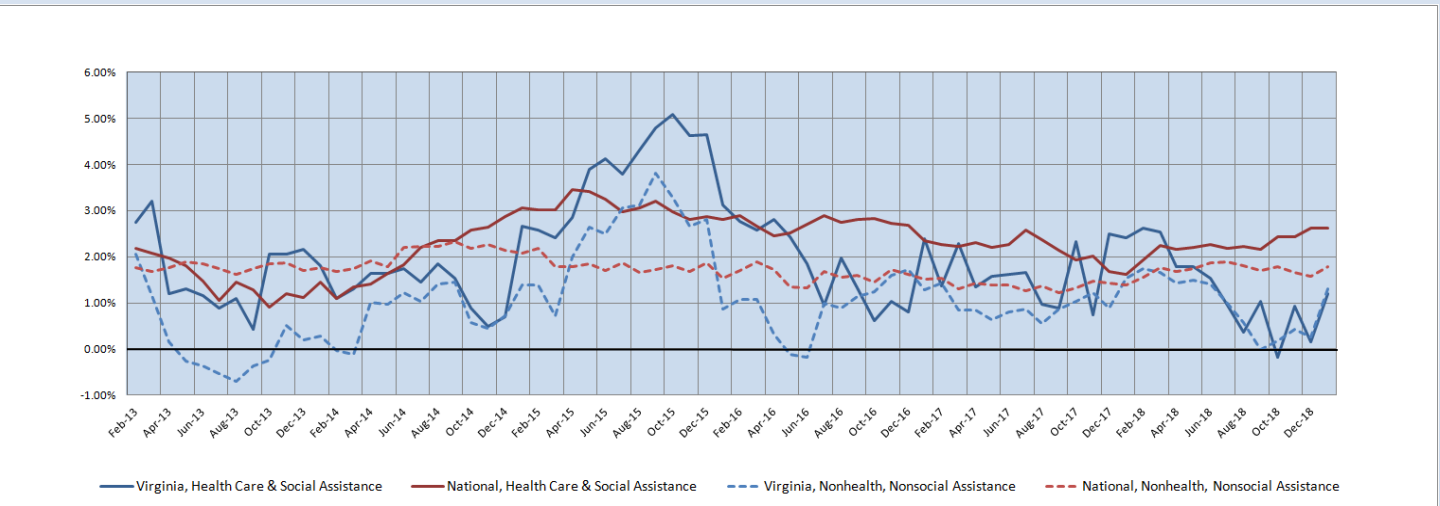
Figure 3: Monthly Change in Employment in National Health Care & Social Assistance Sector, Seasonally Adjusted



State Employment Growth

After falling to 0.15% in December, the six-month moving average of the employment growth rate in Virginia’s HC&SA sector experienced a dramatic reversal in January by increasing to 1.21% during the month, thereby reaching its highest value in seven months. The six-month moving average of the growth rate in Virginia’s total nonfarm payroll also increased significantly in January from 0.27% to 1.30%. This also represents a seven-month high for the six-month moving average of the growth rate in Virginia’s total nonfarm payroll. There was also a smaller increase in the comparable moving average for the nation’s total nonfarm payroll, which rose from 1.57% to 1.78% in January. As for the national HC&SA sector, its six-month employment growth rate moving average remained constant at 2.62% during the month.

Figure 4: Six-Month Moving Average, Employment Growth, Seasonally Adjusted



Healthcare Workforce
Data Center

Perimeter Center
9960 Mayland Drive, Suite 300
Henrico, VA 23233-1463

Phone: (804) 367-2115
Fax: (804) 527-4434
E-mail: hwdc@dhp.virginia.gov

www.dhp.virginia.gov/hwdc/

HWDC Staff:

Elizabeth Carter, PhD <i>Executive Director</i>	Yetty Shobo, PhD <i>Deputy Director</i>
Laura Jackson, MSHSA <i>Operations Manager</i>	Christopher Coyle <i>Research Assistant</i>

Follow us on. . .

Tumblr: <http://vahwdc.tumblr.com/>

The Department of Health Professions Healthcare Workforce Data Center works to improve the data collection and measurement of Virginia's healthcare workforce through regular assessment of workforce supply and demand issues among the 80 professions and 350,000 practitioners licensed in Virginia by DHP.

The HWDC collects data on Virginia's licensed health professionals through surveys completed during the online license renewal and application process. Survey results and data may be accessed on our website: www.dhp.virginia.gov/hwdc/.

The HWDC also provides a series of Virginia Healthcare Workforce Briefs based on data collected by the US Department of Labor's Bureau of Labor Statistics and the US Department of Commerce' Bureau of Economic Analysis.

Virginia Healthcare Workforce Briefs:

Series 1: State & National Employment (Monthly)

Series 2: Virginia Regional Employment (Monthly)

Series 3: Income & Compensation (Quarterly)

About the Data

Data in this report are from the US Department of Labor, Bureau of Labor Statistics' Current Employment Statistics program. The CES program surveys about 143,000 businesses and government agencies monthly. Unless otherwise noted, this series uses seasonally-adjusted data that removes seasonal variations related to weather, holidays, weekends, seasons and other predictable variations. This allows us to better examine underlying trends in the labor market. Data from recent months are preliminary and subject to revision in future releases from the CES. Revisions will be reported in future editions of this series. Unless otherwise noted, the CES data presented in this series:

Includes:

- ◆ Data on employed individuals drawing a paycheck (payroll employees).
- ◆ All employees, regardless of role, occupation or hours worked.
- ◆ HC&SA employees in the private sector only.
- ◆ Persons employed by health professionals in private practice.
- ◆ Both government and private sector workers in nonfarm employment data.

Does not include:

- ◆ Self-employed workers or volunteers, including health professionals in private practice.
- ◆ HC&SA employees in the public sector. (These are counted as government workers in monthly reports).
- ◆ Information on hours worked or the quality of employment.
- ◆ Government workers in HC&SA level data. (Government workers, regardless of occupation and role, are classified as public sector employees).